

The Art of VillaSport

ATHLETIC CLUB AND SPA

Presented by
21st Century Art Consultants

VillaSport places a high priority on making your experience pleasurable while you utilize their facilities. The artwork they have chosen is a major part of that experience.

Enjoy your experience!



DAVID GERSTEIN

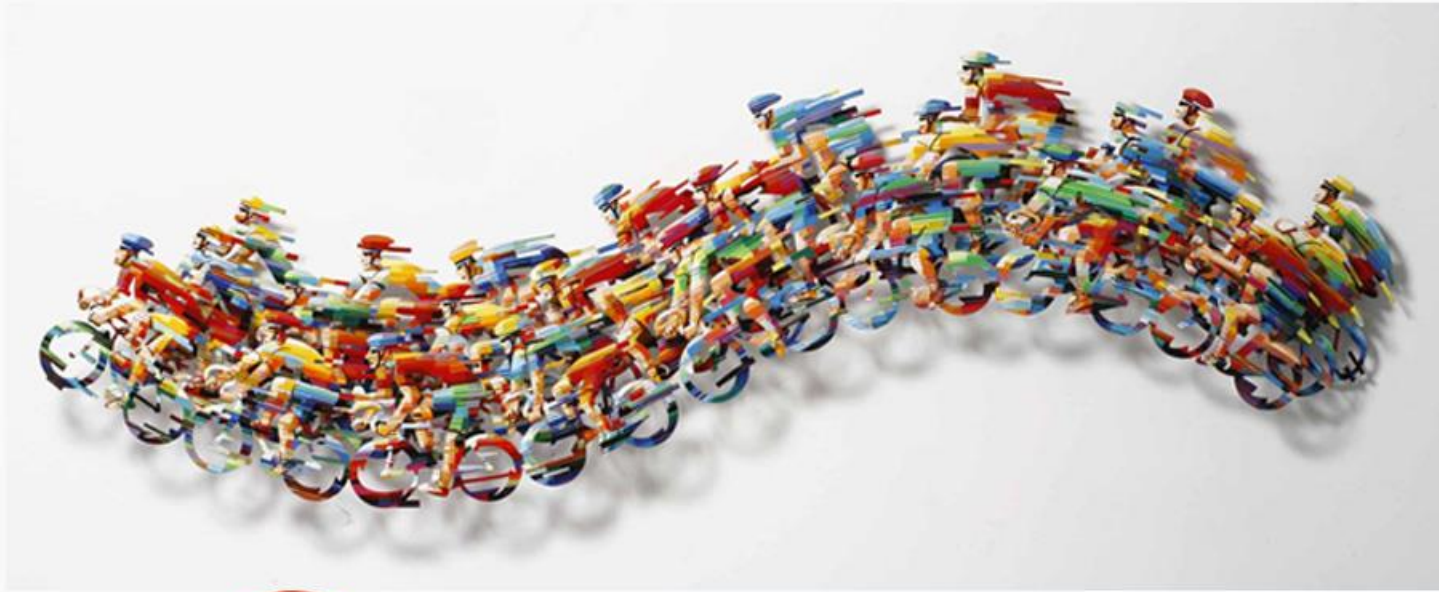
David Gerstein has studied at the most respected art academies in London, Paris, Israel and New York. His well-known, three-dimensional wall sculptures are rich in color, dynamic in character and fanciful in execution. Gerstein witnesses daily activities and mundane objects and transforms them into vibrant works of Happy Pop Art. In addition to the many private collections and galleries that house his creations, David's work can be seen in prominent public installations and museums throughout the world

Paintings are "Wall sculptures hand painted, cutout steel" or "sculpture in metal"; Gerstein, an Israeli painter and sculptor, began as a figurative painter and illustrator of children books and was recipient of the Israel Museum Prize for illustration. Gerstein's post-pop art style is characterized by bold colored, multilayered cutout steel. His outdoor sculpture "Momentum" is Singapore's tallest public sculpture.

Gerstein's creations are outwardly simple and transparent - their existence airy and light - as they strive to touch the untouchable. Both his paintings and sculptures embrace a quintessential quality of form and of matter. They appeal to their viewers without bashfulness or hesitation, seducing them into a world of art, full of enchantment and delight.

Gerstein seeks to expand the limits of two-dimensional paintings into three-dimensional sculptures. In his choice of subject matter he wishes to break down the existing barriers between the work of art and its audience by creating enchanted and straightforward images, which render, at times, intimate, dream-like naive scenes and at other times, cinema-scope-like, large scale, choreographed events. His easily recognizable artistic colorful syntax have developed gradually, reflecting a search for a distinct voice, which ranges from the local to the universal and echoes several levels of representation simultaneously.

Gerstein's work can be found in public and private collections around the world.



ROBERT WILLIAMSON

Robert Williamson creates site specific artwork, murals, and graphic designs for hospitality, retail, corporate, and residential projects. He works to create unique and distinctive environments for people to enjoy. For businesses this helps build brands, for shared spaces it provides a visual anchor, and for residences it enlivens living space.

His is a visual expression that tells a story, establishes a visual vocabulary or rhythm, evokes a time, place or atmosphere, or a feeling of well being and discovery.

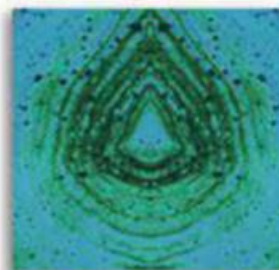
This particular sculpture is constructed of small pieces of wood painted and inlaid to create the image of the two joggers.



GRANT LOUWAGIE

Grant Louwagie brings a range of knowledge to each project.

With focuses in both graphic design and painting, he has a unique approach to corporate identity, marketing collateral, and marketing strategy. Grant offers a detailed perspective in color matching and an ability to create unique compositions. When designing art for a space Grant's range of abilities provide distinctive solutions. His work is featured in residential and commercial environments around the US. He works in multiple mediums including graphic illustration, multi-media abstract and graphic design.



PHOEBE BRUNNER

By creating an alternative view to traditional landscape painting, Phoebe Brunner's re-conceived landscapes of the American West and the coast of California, simultaneously real and surreal, invite the viewer to experience the surroundings with a new perspective and to lose oneself in an environment of nature enhanced and unexpected. Through the interplay of light and space, unorthodox colors, patterns and movement, a symbolic narrative with a mystical presence arises. Primal emotions, and instinctive, intuitive forces from within the human psyche are accessed through awareness of our natural world.

Derived from, but not documentations of specific places, these views are "re-imaginings". The viewer is led to wonder where these landscapes exist – with a longing to visit, and at the same time search in their own subconscious to find a personal location.

Created by tapping into a huge visual reservoir of memories, Brunner also utilizes field notes, photos, and thumbnail sketches. A third generation Californian, she spent a large part of her childhood on a 15,000 acre coastal cattle ranch – one of the original Spanish Land Grant ranchos – near Santa Barbara. Her fondest memories, that inform her work today, are roaming alone on horseback for hours and hours, up and down the canyons, seeing the land go on forever from the ridgetops, and on the beach, observing the natural world with the innocent imagination of childhood.

Brunner's work can be found in private and public collections throughout the US. She has also participated in numerous group and solo exhibitions.

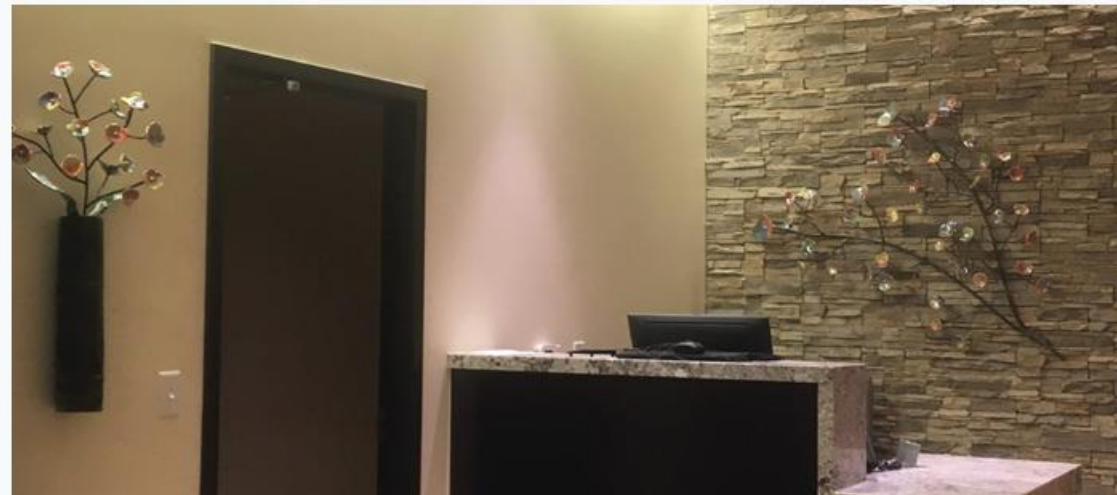


JUTTA

Jutta was born in Germany and discovered clay during her 5-year stay in Kyoto, Japan. Her sensuous wall reliefs emerge above all from an intense identification with the outdoors and a fascination with all of nature's shapes and textures. She works with a complex palette: underglazes, glazes and metallic lustres. Her airbrushing technique and a multi firing process yield rich and subtle color patterns. Her work has been exhibited nationally and is being collected by individuals and corporations in the United States, Europe and Japan.

Type of Art:
Ceramic sculpture

Education:
Sorbonne University, Foreign Languages and Literature,
Paris, France; studied pottery during five-year stay in Kyoto, Japan.
Workshops with Paul Soldner, Ken Ferguson, Jim and Nan McKinnel



NATALIE BLAKE

Natalie Blake started as a solo artist. She majored in ceramics and painting at Kenyon College in Ohio earning a BA in 1992. She expanded her knowledge of the vessel through a Thomas J. Watson post-graduate, year-long fellowship in Asia where she studied with indigenous potters in Indonesia, Korea, Nepal and India. Returning home, she created a line of functional, wood and gas-fired pots that she sold at street shows in her early twenties. The business grew over five years to three employees and representation in 80 galleries around the globe.

Seeking new markets and inspiration for the studio team, Natalie and one of her employees developed ceramic wall tile murals. This art form inspired residential and corporate interior designers, corporate and public facility art-buyers, architectural firms and private homeowners in search of original and functional art for large walls, niches and exterior landscape design.

The uniqueness and adaptability of Natalie's approach to an ancient, yet contemporary art form, combined with its practical public application, has grown her business into what is now an internationally recognized public art. The tile murals have been used widely in healthcare institutions and rehabilitation settings.

Since 2010 the studio has been awarded three large, public art grants. In 2010 the studio was selected from a pool of 600 applicants for a \$200,000 public art grant from Chabot College (Hayward, CA). The grant has inspired the studio staff to innovate new work, including cement art tiles and slumped glass tiles. A total of nine installations were created for the college campus. In 2013 Natalie was selected to create three, large exterior tile murals for the City of Tampa, FL; and in 2014 the studio was awarded a public art grant to create 10 tile murals to be installed on columns in an Alaskan high school.

Natalie has been awarded several awards including the American Craft Council's "Best in 3D" Award of Excellence; the American Craft Magazine's Niche Award; and the American Craft Exposition's Evanston Hospital Purchase Award. She has been juried into the Smithsonian Museum Craft Show, the Philadelphia Museum Craft Show, and the American Craft Exposition Show, among others.



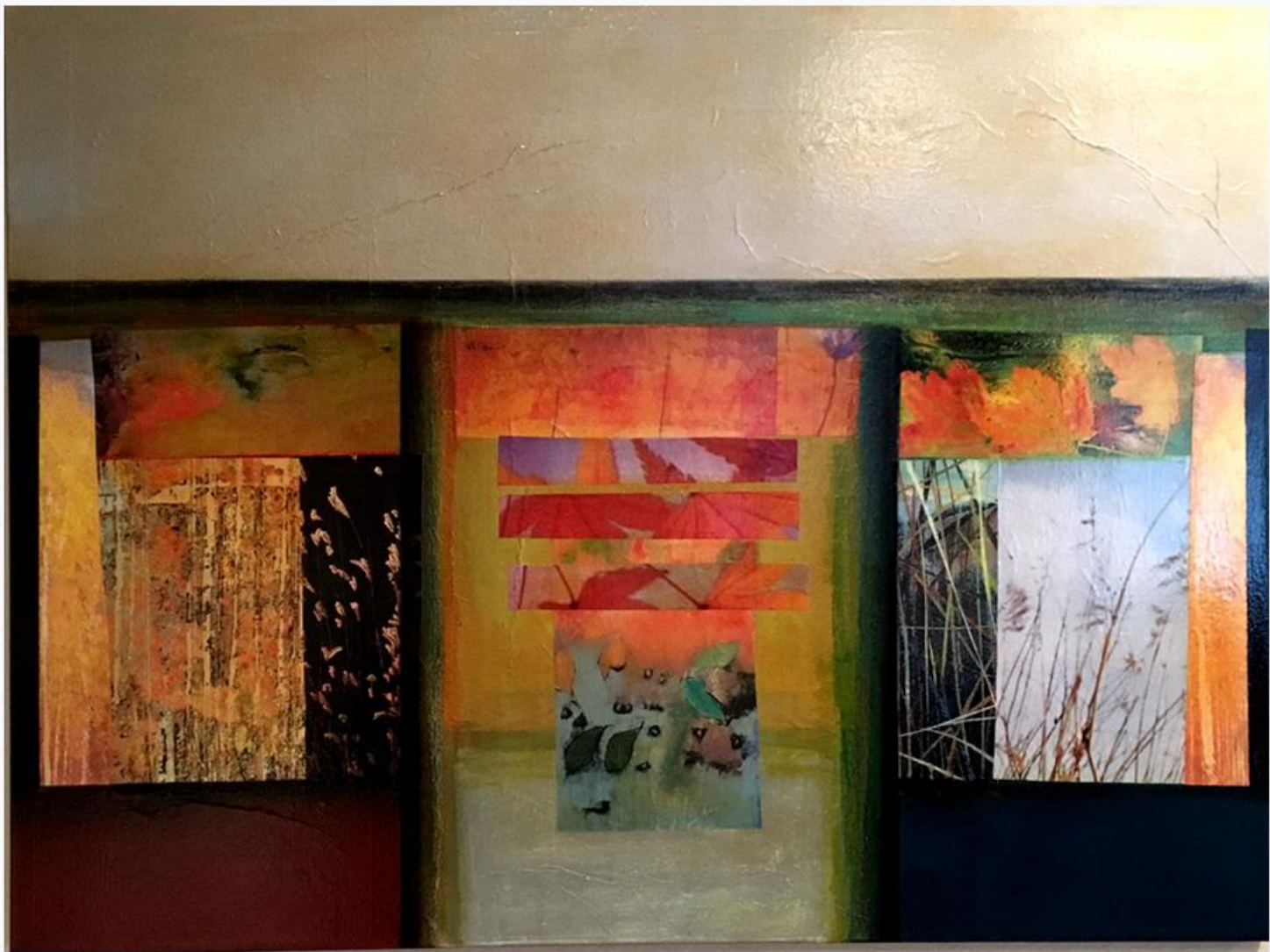
ANNE WALLACE

The Aesthetic of Ann Wallace's work lays in its silence. She has incited a solitary transaction between spectator and painting. A private and intimate meeting, encouraging an undisturbed absorption of image.

Using the canvas as a single plane, stressing the two-dimensional character of painting and rejecting illusions of depth and gesture brushwork. Wallace applies colors in blocks that span the entire surface, suggesting that the composition may be yet a detail of a larger field.

The architecture of the canvas is divided laterally and horizontally into zones of color contrasting tonal relationships. Using predominantly dry earth tones of sienna's, sage, ochre's that impart an illusion of transparency and translucence in surface.

Veils of color lend a mysteriousness to Wallace's work, accentuated at times by an oriental symbol or typeset letter hidden or boldly displayed within the composition, as if hints in secret code to a larger message. These letters are placed deliberately as a focal point to exalt mind above the banal contingencies and trivializations of social life to a place more spiritual, contemplative, and intimate.



VillaSport places a high priority on making your experience pleasurable while you utilize their facilities. The artwork they have chosen is a major part of that experience.

If any of the artwork at VillaSport interests you, feel free to contact me with any questions at:

paula@21stcenturyartconsultants.com
www.21stCenturyArtConsultants.com

21st Century Art Consultants offers you creativity, innovation, and over 30 years of experience in the selection of the perfect artwork for spaces in your home or office. We provide an extensive inventory and vast resources of quality artwork from local, national, and international artists to meet all of your corporate and residential art needs.

